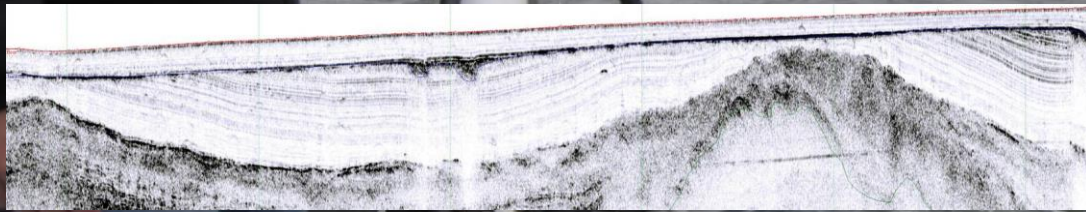


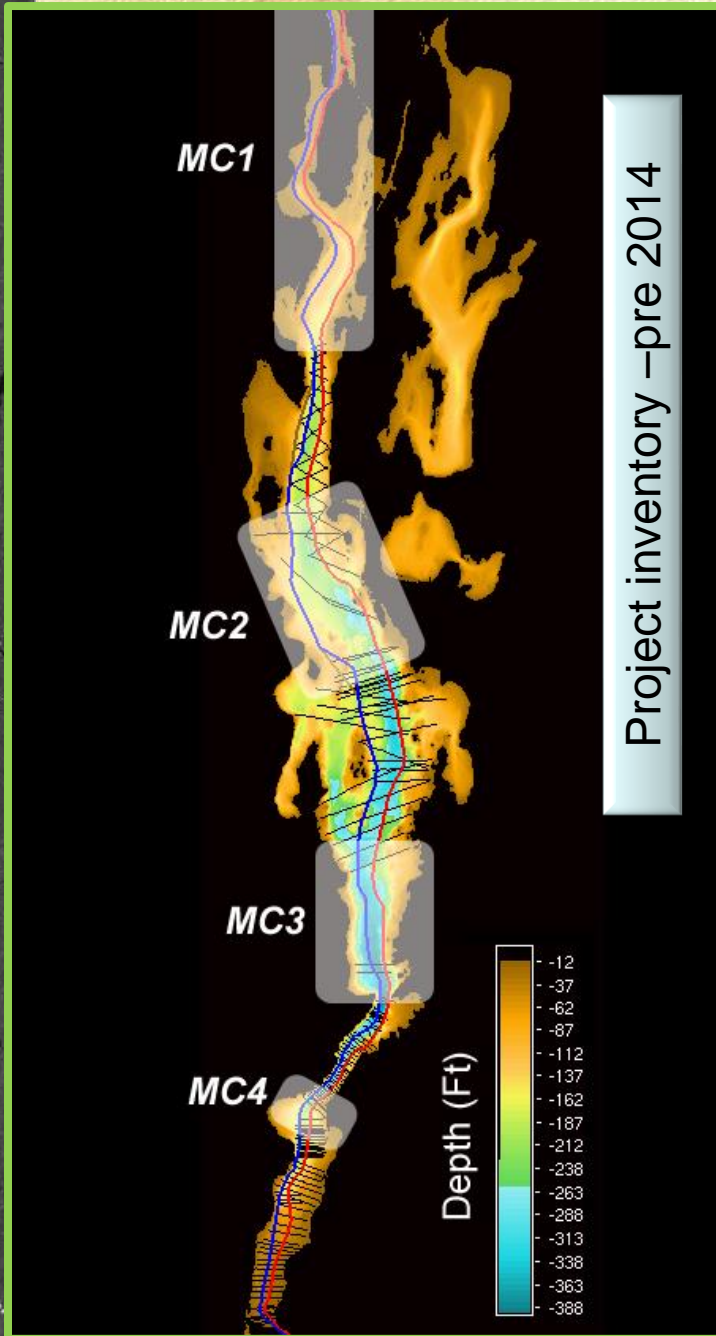
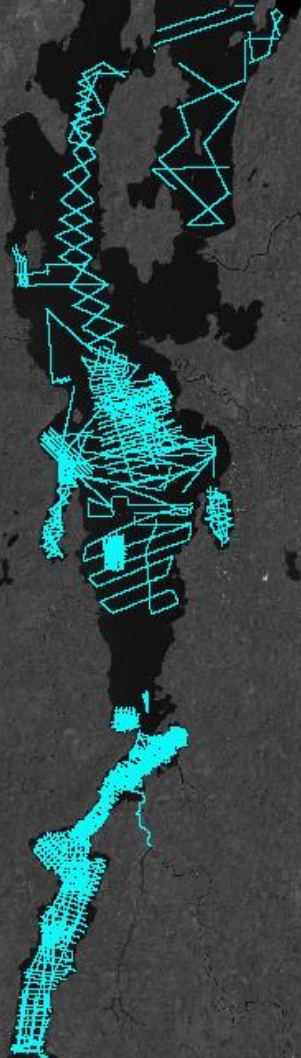
Sediment/Bottom Characterization

Patricia and Tom Manley

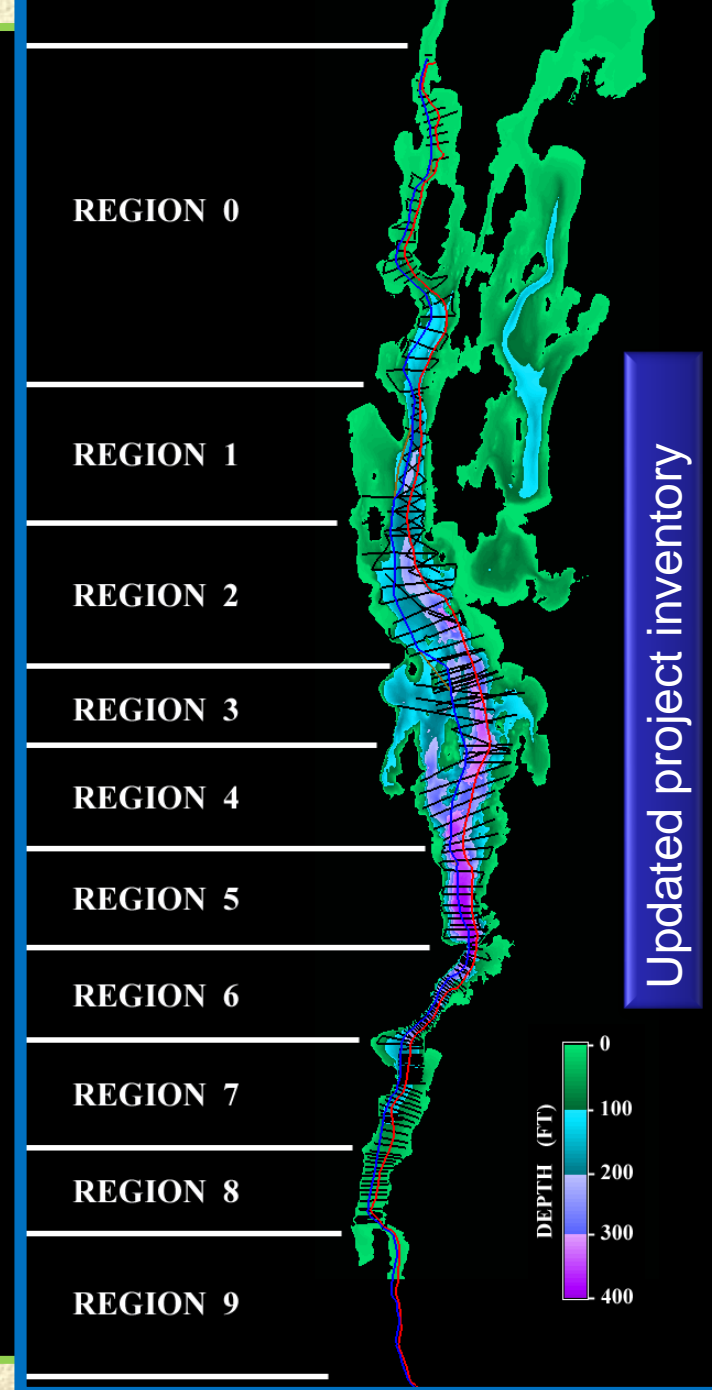


10/21/2009 01:52

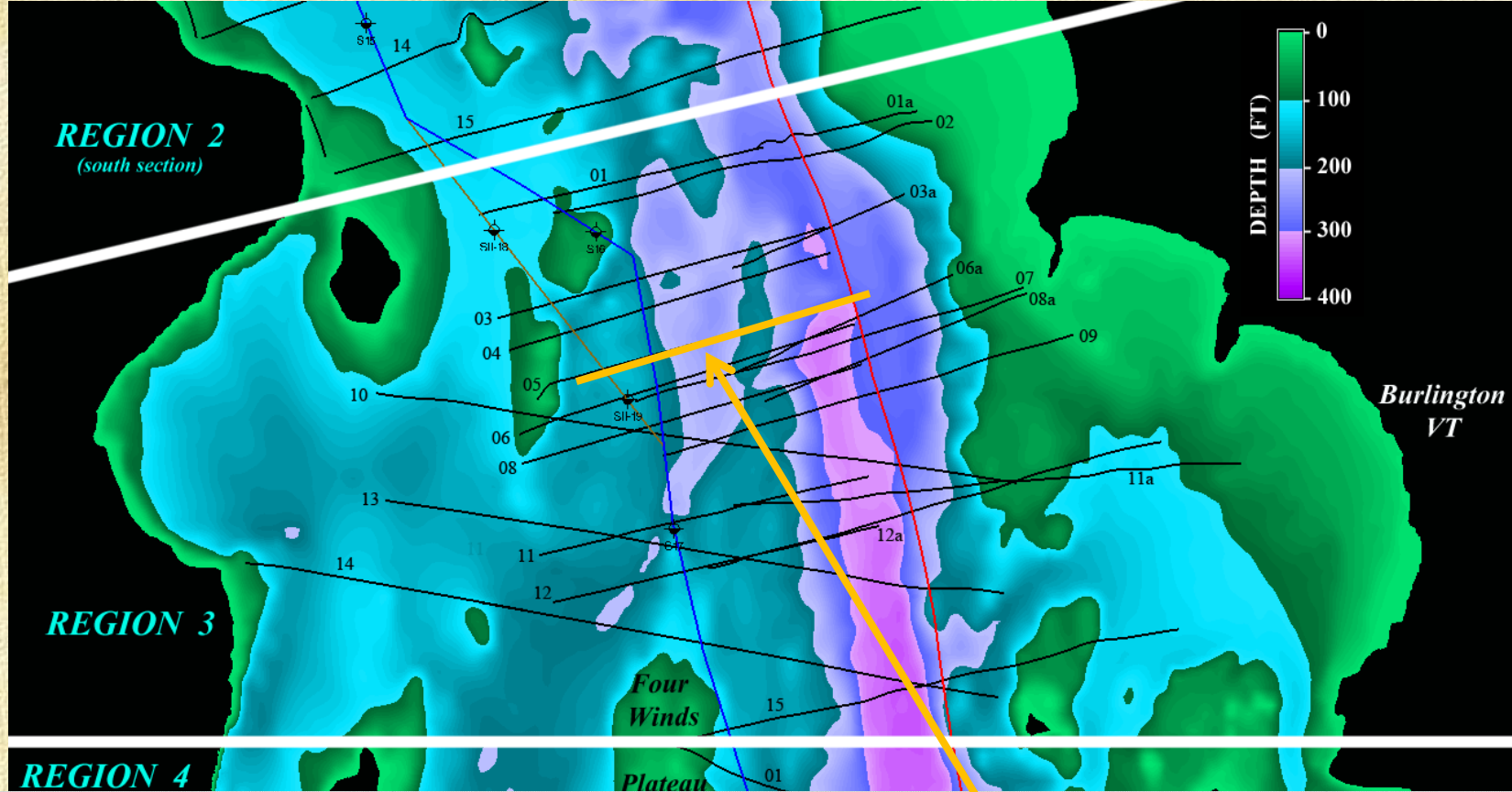
Total Chirp line inventory



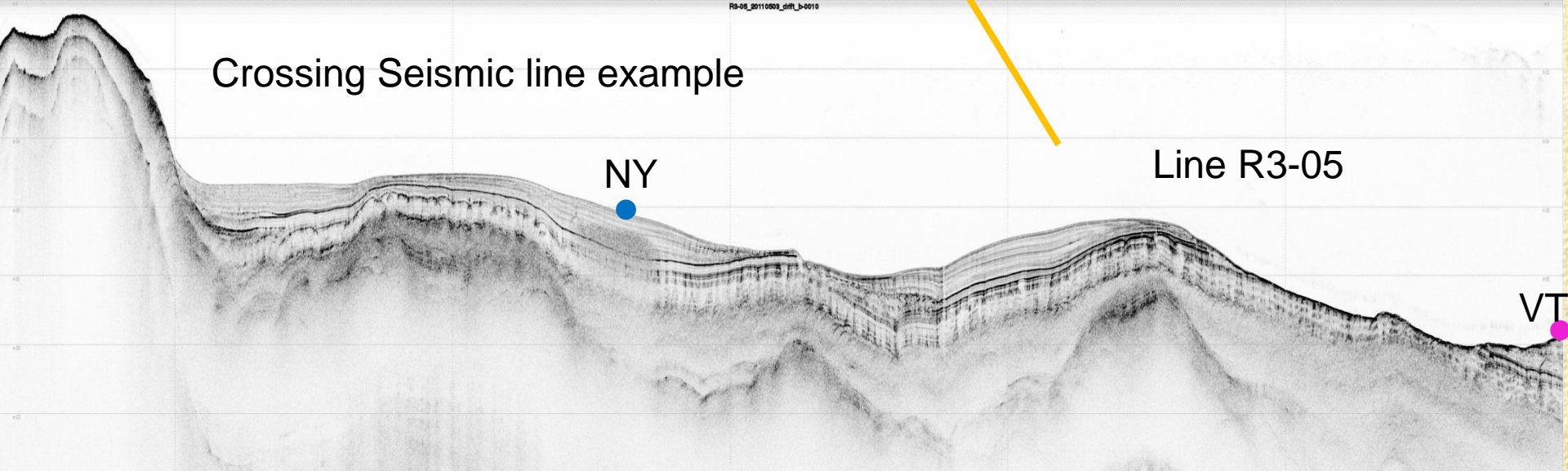
Inventory of Seismic Lines

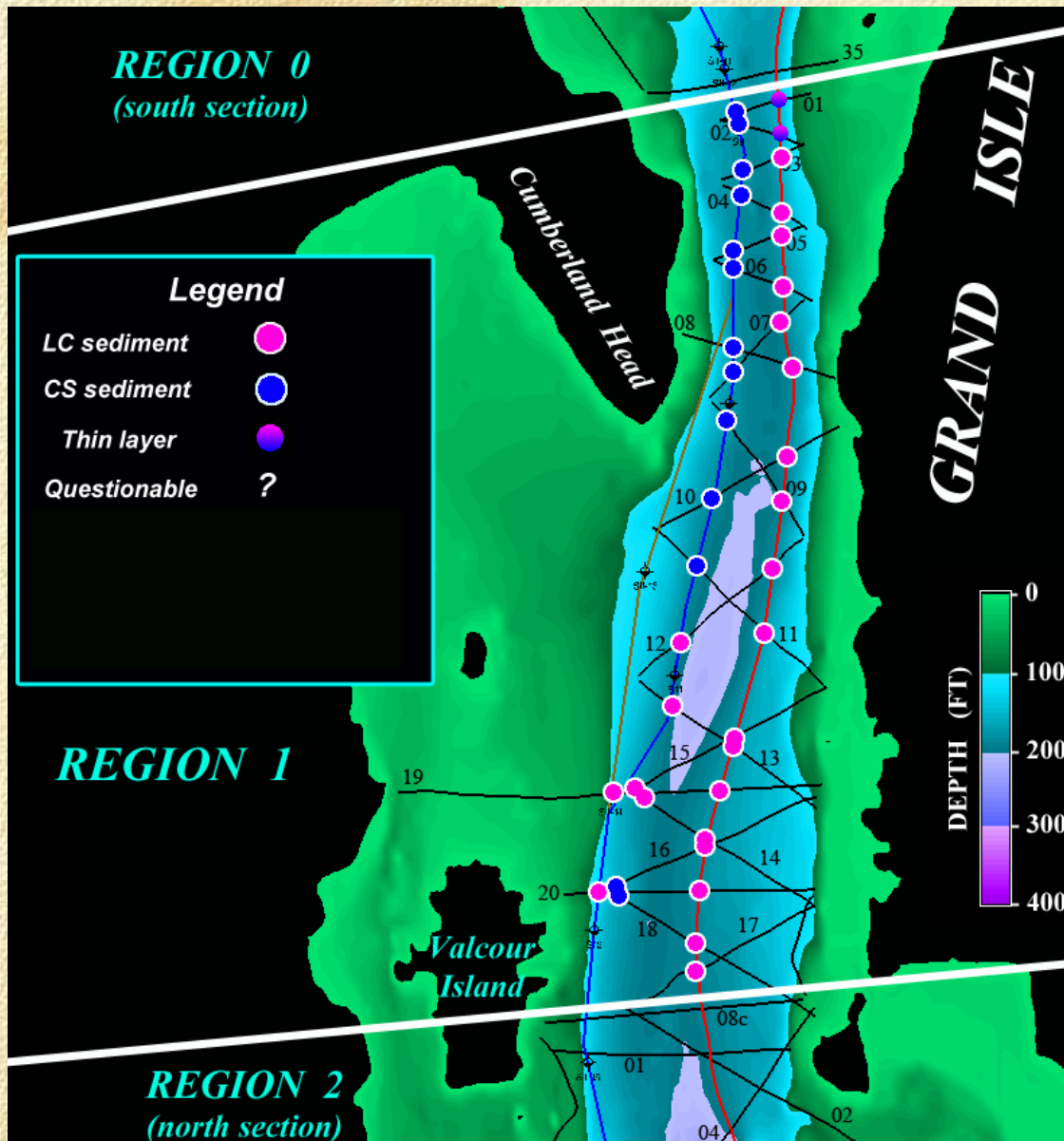


Updated project inventory



Crossing Seismic line example





Example of similarity analysis – Region 1

Final Analysis of sediment characterization

- ❖ Of the 955 sub-bottom profiles, 224 lines were found to satisfy “close-approach” criteria.
- ❖ Of these “close-approach” lines, 24 were not acceptable due to the distance between the NY and VT Corridor
- ❖ From the 200 useable profiles showed
 - Roughly 88% of the VT and NY corridors were of similar sediment type.
 - 11% showed dissimilar sediment type.
 - 1% were “Unknown”. Lines that did not allow for determination of a specific sediment type.
- ❖ Seismic profiles in the south lake were inconclusive due to organic gas content. The close proximities of the NY and VT lines would have similar sediment type.